

Proposal for sign lights

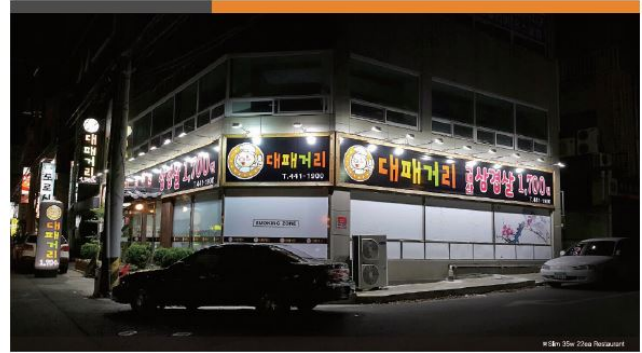


Sign floodlight

Stellon horizontal sign lighting is: LED horizontal sign dedicated lighting. It can be substitute for metal halide lighting. It provide differentiated from Chinese product as perfect waterproof, moisture proof technique, long lifespan, high durability, and bright light distribution,

 Perfect water proof • IP68, related patent	 Luminous efficiency • High efficiency compare with Metal halide.	 Slim • Slim & light design	 120° • 120degree of light distribution	 Easy installation • Simple installation system
--	--	--	--	--

※ Application



※ Light introduction

Flood light | Neo plus light

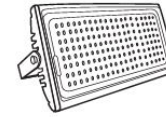
35W / 50W / 75W

Slim 50W  



80W

Neo plus 80W  



Wall washer light

25W / 50W

Light shower pop 25W 